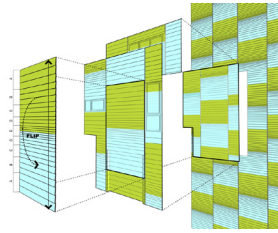


Butler Street

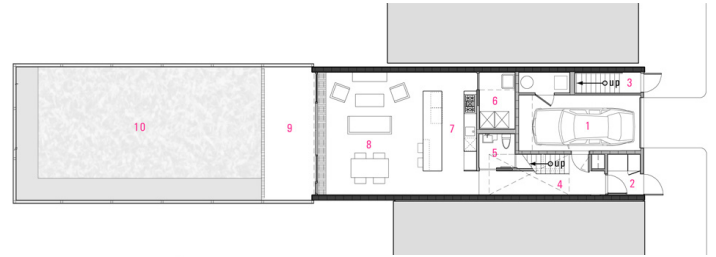
This modern townhouse is a ground-up construction on an architecturally varied urban street. Challenging and completing the townhouse typology, this unique structure finds its place on the block. Units for the owner and tenant occupy two discreet zones behind a unified street façade. The owner's duplex on the first and second floors consists of three bedrooms, three bathrooms, an office area, utility/laundry room, one-car garage, and private backyard. The home is customized to provide comfort in a highly structured modern space. The duplex is organized with the entry and garage occupying the ground level street façade and the combined kitchen, dining and living areas opened up to the private rear yard. The one-and-a-half story glass rear façade on the second floor provides a light filled master bedroom suite complete with a full-width terrace overlooking the back garden. The rental unit has two bedrooms and two baths. It is perched on the third floor and is set back from the rear facade; this positioning provides privacy to the owners' garden below. The renters have a private terrace space on the street façade.

Square Feet: 3,150
Location: Brooklyn, NY
Completed: 2005

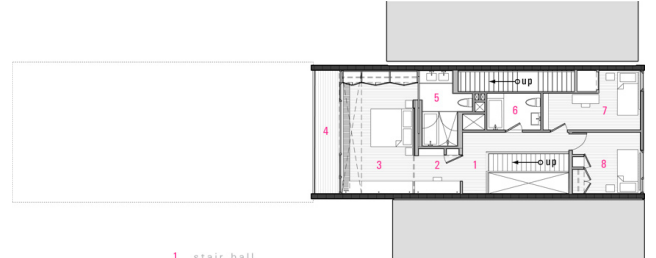




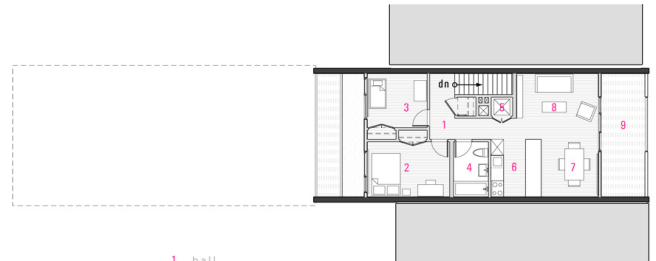
- (First Page) Living area
- ↑ Front façade
- ↗ Façade exterior siding pattern
- Kitchen
- ↘ View out to the owner's terrace
- ↙ Entry, owner's duplex



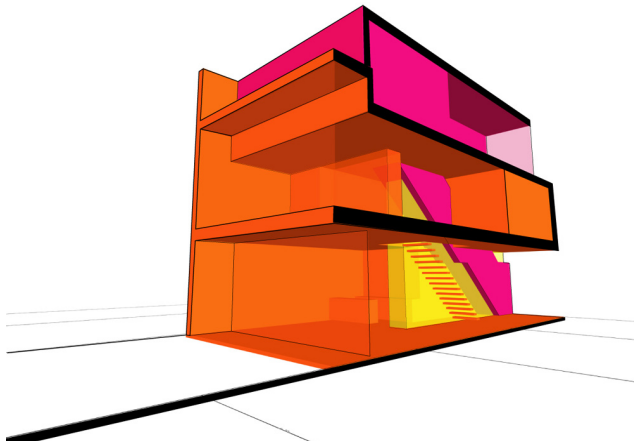
- 1 garage
 - 2 entry lower
 - 3 duplex
 - 4 entry rental unit
 - 5 stair hall
 - 6 powder room
 - 7 utility room
 - 8 kitchen
 - 9 living and dining
 - 10 back terrace
- FIRST FLOOR**



- 1 stair hall
 - 2 office
 - 3 master bedroom
 - 4 terrace 1
 - 5 master bathroom
 - 6 bath 2
 - 7 study
 - 8 bedroom 2
- SECOND FLOOR**



- 1 hall
 - 2 bedroom 1
 - 3 bedroom 2
 - 4 bath
 - 5 laundry
 - 6 kitchen
 - 7 dining
 - 8 living
 - 9 terrace 2
- THIRD FLOOR**



- ↑ Rear façade
- ↓ Sectional diagram
- ↗ Floor plan: first floor
- Floor plan: second floor
- ↘ Floor plan: third floor (rental apartment)